



SAINT LYDIA'S

ANNUAL REPORT 2016



St. Lydia's is a neighborhood church. We work together to dispel isolation, reconnect neighbors, and subvert the status quo.

2016 was about...

GROWING DEEPER ROOTS

WE **matured** AS A CONGREGATION



This year we **INCORPORATED** as a congregation

We signed our congregational charter and became a legal congregation!

Incorporation marked a big step forward, and Lydians have stepped into fuller roles.

This year we grew from a core group of 70 to a core group of 84.

Congregational giving grew by 28%.

Emily's **SABBATICAL** was a chance to step up

A five-week mini-sabbatical gave Emily a chance to rest and reflect in the Spring.

Congregants preached in her absence, planning a series on the Gifts of the Spirit.

We planned our first Winter Retreat.

Emily preached a summer series on St. Lydia's identity.

“The sabbatical team, in an effort to predict everything that could go wrong while Emily was away, held many meetings and developed multi-tab spreadsheets. The reality of church life during Emily's sabbatical was more rich and life-giving than any checklist could capture. For example, the preaching series during the sabbatical featured new congregant voices. Hearing and supporting Lydians as they shared their stories sparked conversations that helped us know each other and ourselves better. Both Emily and the congregation grew during the sabbatical and St. Lydia's is stronger as a result.”



Andie
congregant

WE DEEPENED OUR partnerships

I see St. Lydia's stepping into the call to be not only a community within the walls of the church but to be a community of faith that helps to bring justice to the city of New York. St. Lydia's has been a powerful member of Faith in New York and we look forward to seeking justice for our city with them in the future!

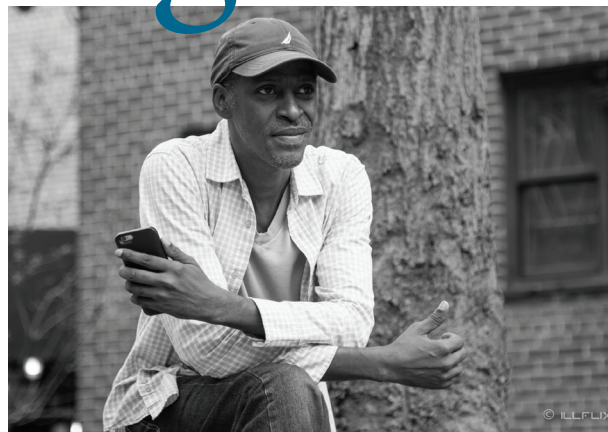


Onleilove Alston
Executive Director
of Faith in New York

& CONNECTED IN OUR neighborhood



We continued to work with Faith in New York to seek justice in our city, attending their Prophetic Leadership School and joining them for planning and actions.



We curated a photo exhibit of portraits by ILLFLIX as a part of Gowanus Open Studios. The exhibit featured residents of the Gowanus Houses sharing their perspectives on the changes in our neighborhood. At the exhibit, we gathered 90 signatures for a petition advocating for low income residents in our neighborhood impacted by gentrification.



We hosted a CopWatch event attended by over 50 people. CopWatchNYC gave instruction about what to do when witnessing an arrest or police interaction and shared their work preventing police brutality.

OUR worship WAS CHALLENGING



CONFESSION

In Lent we explored the theme of Confession, writing our confessions on slips of paper each week in worship and tying them to branches that hung above our dinner tables.



Baltimore, 2015
photographer: Devin Allen

“If this man were not a criminal, we would not have handed him over to you.”

We have imagined our siblings to be criminals.

GOOD FRIDAY

Our Good Friday service focused on contemporary images of persecution and suffering, inviting us to draw connections with the passion narrative and make our own confessions.



EASTER VIGIL

We celebrated Easter in the light of the resurrection. Over 75 people gathered to light the fire, dance, and feast!



And WAFFLE CHURCH

continued to draw a crowd, with monthly attendance holding steady at 29.

WE PRACTICED active resistance



All year long, St. Lydia's proclaimed a God of love.

From our presence at protests to the sign in our window, we're sending a message that God stands with the vulnerable. In the wake of the election, we met to develop a three-phase plan of response.

Since the chaos from the fallout of the recent election, I have some hate within me. While there is hate being acted on minority groups, resisting hate means not only resisting hate toward others but resisting hate in myself. There is no more important time for love than now.



Ernest
congregant



We worked as a member congregation at Faith in New York to develop a broad civic engagement plan to ensure that New York is a city where the vulnerable are protected.

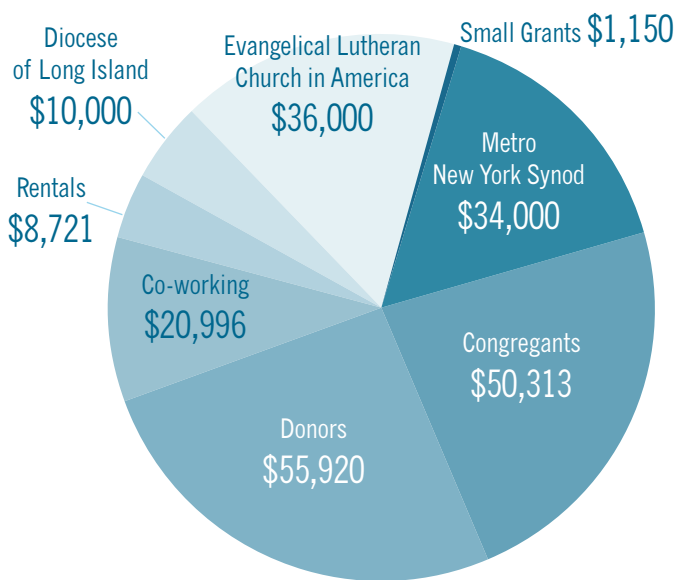


And we celebrated with Pride, marching alongside neighbors who may not always receive the message that they are beloved by God and by the church.

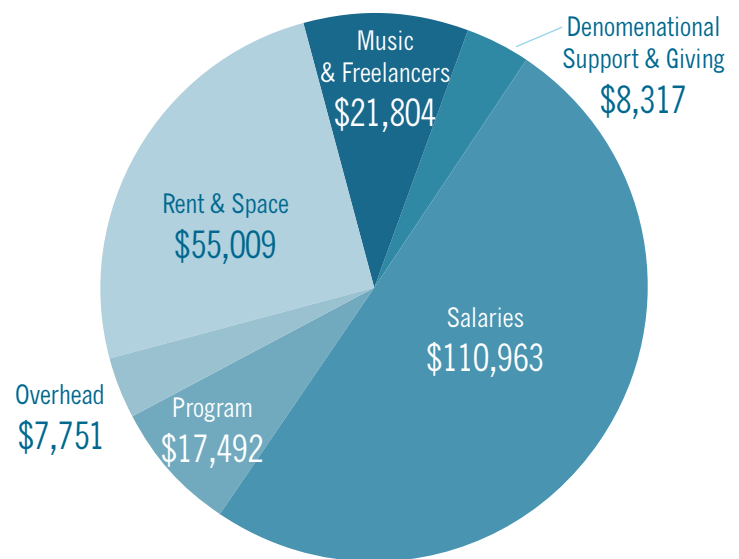
giving IN 2016

This year our congregational and donor giving has been stronger than ever.

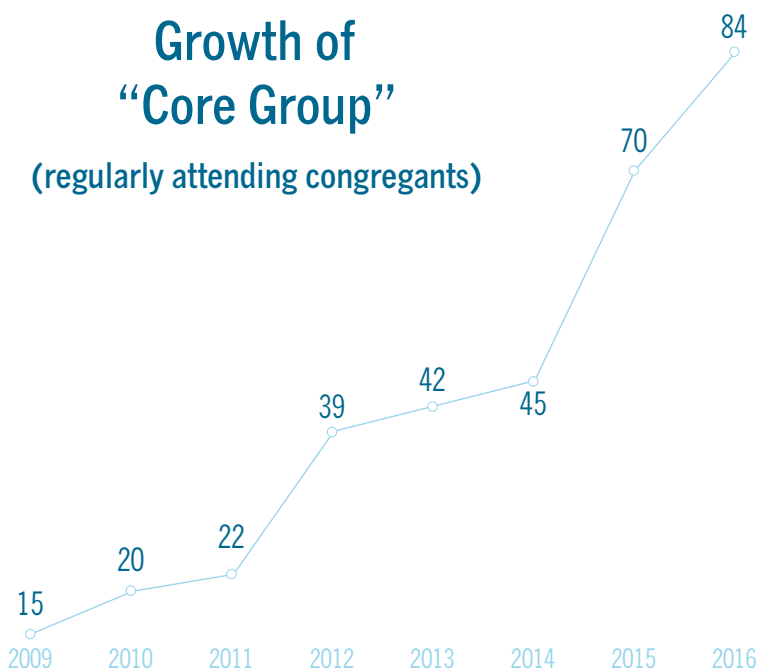
2016 Income TOTAL: \$217,100



2016 Expenditures TOTAL: \$221,336



Growth of “Core Group” (regularly attending congregants)



St. Lydia’s Attendance and Regular Giving by Year

Year	Average Attendance	Congregational Giving	Donor Giving
2010	15	\$4,699	\$18,305
2011	18	\$8,760	\$11,661
2012	21	\$10,585	\$21,373
2013	33	\$19,449	\$18,973
2014	41	\$18,244	\$12,782
2015	48	\$39,371	\$44,747
2016	47	\$50,313	\$55,920

OUR leadership



EMILY SCOTT, Pastor

Emily Scott is the founding pastor of St. Lydia's. A graduate of Yale Divinity School and the Institute of Sacred Music, Emily has learned so much from her experience leading St. Lydia's. This year, she is most proud of the work we've done connecting in the Gowanus neighborhood. She enjoyed preaching about the history of the neighborhood and curating a photo exhibit featuring residents' voices. Emily got lots of rest and renewal this year on a short sabbatical. The highlight of 2016 was receiving the Alumni Award for Distinction in Congregational Ministry from Yale Divinity School in October.



JULIA STROUD, Community Coordinator

Julia has been at St. Lydia's since June 2014. It is her great joy to make sure (healthy and delicious!) food gets around the tables at dinner church. Julia works with volunteer cooks from the congregation to choose vegetarian recipes so that worship services have their most necessary ingredient: a meal. In addition, Julia makes sure everything runs smoothly at "the office." This year, Julia was delighted to focus her efforts on the year-end fundraising campaign, a chance to let friends of St. Lydia's know about the transformative work that St. Lydia's does in its neighborhood, and the ways it will continue to spread love and hope in 2017.



SARAH SEGAL McCASLIN, Waffle Church Minister

Sarah is a pastor and pastoral psychotherapist who is devoting much of her vocational imagination these days to the spiritual lives of children and the expansive opportunities for inter-generational worship. Sarah's favorite part of Waffle Church is the spontaneous leadership that children offer during communion. "And Jesus took a loaf of bread, and he broke it, and he gave it to his disciples, saying..." "THIS IS MY BODY!" the children cry out.



HANNAH JOHNSTON, Social Justice and Pastoral Care Coordinator

Over the past year Hannah has built up St. Lydia's Social Justice Show-Up Team from 7 to 23 people and worked alongside Faith in New York and Families United for Racial and Economic Equality on campaigns to seek justice for the most vulnerable in our city. Highlights of this year have included marching in NYC Pride, participating in a "Faith over Fear" interfaith prayer vigil, and seeing our church community step-up to declare 'love over hate' in the wake of the election.

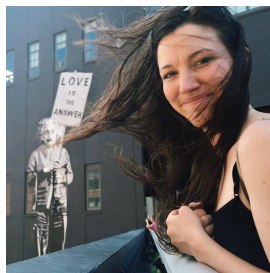
LEADERSHIP TABLE



Joel Avery



Richard Foster



Chloe Lyon



Martha
Lineberger



Jason Whittle

WITH **thanks** TO OUR DONORS

FRUIT OF THE VINE

(\$250–\$499)

13 congregants
John Biro
Sarah Buteux
Edward Chan
Kaji Douša
Marjorie Henning
Kevin Lam
Clay Morris
Joanna and Kurt Nelson
Barbara and Nigel Renton
Ben Smith and Liena Zagare
Marilynne Scott
Georgia and Stan Segal
Anna Woofenden
Heather Young

MILK AND HONEY

(\$500–\$999)

11 congregants
Leslianne Braunstein
Alan Bronstein and Nora Smith
Helen Burr-Cackowski
Jenifer Creswell and Ian Doescher
Mary Jane Donohue
Julia McCray Goldsmith
Brian and Tracy Haughton
David Laurance
Jan and Kelly Lyon
Tom Massey
Helena Meyer Knapp
Nancy and William Stroud
Andrew Wallace Walter

THE BREAD OF LIFE

(\$1,000–\$2,499)

12 congregants
Ben Colahan
Amy and Kelly Dolan
Iberedem Ekure
Richard Fabian and Stephen Holtzman
Mildred Kreider
Amy Lopez-Cepero and Mieke Vandersall
Donald and Ellen Schell
David and Marilynne Scott
Daniel Simons
Stephanie Spellers
Winnie Varghese

LOAVES AND FISHES

(\$2,500–\$4,999)

3 congregants
Robert and Janet Buescher
Leesy Taggart

MANNA FROM HEAVEN

(\$5,000–\$9,999)

1 congregant

THE HEAVENLY BANQUET

(\$10,000 and above)

The Episcopal Diocese of Long Island

With special thanks to the Evangelical Lutheran Church in America
and the Metropolitan New York Synod for their partnership and support.

We wouldn't be here without you.